



"BRANCHING OUT INTO BAKERVIEW" SCAVENGER HUNT

Created by the UBC Climate Action Mobilizers

Objectives

- To reflect on your relationship with Bakerview Park
- To take inventory of Bakerview Park's strengths & areas of improvement
- To start brainstorming what an ideal Bakerview Park looks like



Activity Overview

- You will be embarking on a [scavenger hunt](#) at Bakerview Park
(📍: 1845-154 Street, Surrey, BC, V4A 5J8).
- This activity can be done [individually](#), in [pairs](#), or [groups of 3-5](#).
- To complete the activity, you will [need](#) the following:
 - Pen or pencil 🖋️
 - Printed copy of the worksheets 📄
 - 30-45 minutes ⌚
- Collect a given number of points and you can earn a UBC CCEL notepad and/or umbrella!
- [Due](#): Tuesday June 20th at 5:00 pm (before Workshop #1)

Name(s): _____

Date & Time Started: _____



PART 1: REFLECTION

Instructions

Take 5 minutes to answer the following questions:

1) Before today, how many times have you visited Bakerview Park?

	Count
Never. Today is my first time!	
Less than 5 times	
More than 5 times	

2) What word(s) come to mind when you think of "Bakerview Park"?

e.g. community

e.g. fun

_____	_____	_____
_____	_____	_____
_____	_____	_____

PART 2: SCAVENGER HUNT

Instructions

It's time to explore! 🔍 Go on a tour of Bakerview Park by **answering the prompts** on the following pages. If the prompt begins with a camera emoji (📷), **take or draw** a small picture.

Follow the prompts on the following pages and collect points:

- Collect at least **15 points** and win a UBC CCEL Notepad!
- Collect at least **27 points** and win a UBC CCEL Umbrella!



📷 Find 3 things that help keep you cool in hot weather.

(+1 bonus point if you explain how)

e.g. trees = 1 point

e.g. trees (shade) = 2 points



(1 point)

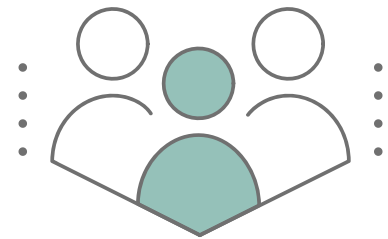
Count the number of trees.

To help keep count, use tally marks in the box below.



📷 Find 3 things that are broken or run down.

e.g. basketball nets = 1 point



📷 Find 3 spaces where community members can gather.

(+1 bonus point if you list an event the space can be used for)

e.g. picnic benches = 1 point

e.g. picnic benches (party) = 2 points





List 3 things that could be added to make you feel safer at night.

(+1 bonus point if you explain why)

e.g. more lamp posts = 1 point

e.g. more lamp posts (less risk of falls) = 2 points

How many water fountains are there? _____ (1 point)

Which types of fountains did you find? (1 point)

spout



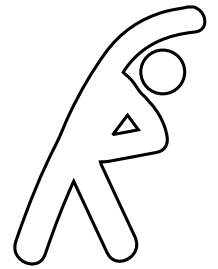
water bottle refill station



bi-level (1 taller, 1 shorter)

other: _____

none



Find 3 things that promote physical activity.

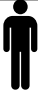

(+1 bonus point if you explain how the feature enables exercise)

e.g. sidewalks = 1 point

e.g. sidewalks (to walk or roll on) = 2 points

📷 Which types of **washrooms** are available? How many of each?

(1 row = 1 point)

Washroom Type	Yes / No	Count
Men 		
Women 		
Universal / All Genders		
Accessible 		
Porta-Potty		

Who is using the park? (1 point)

Indicate how many of each age group with tally marks in the boxes below.

Children

Teenagers

Adults

Older Adults

📷 What is 1 feature of Bakerview Park

you like? (1 point)

📷 What is 1 feature of Bakerview Park

you dislike? (1 point)

Reminder: Take or draw a **photo** whenever you see the camera (📷) emoji! These will be useful for the next workshop.

THANK YOU!